

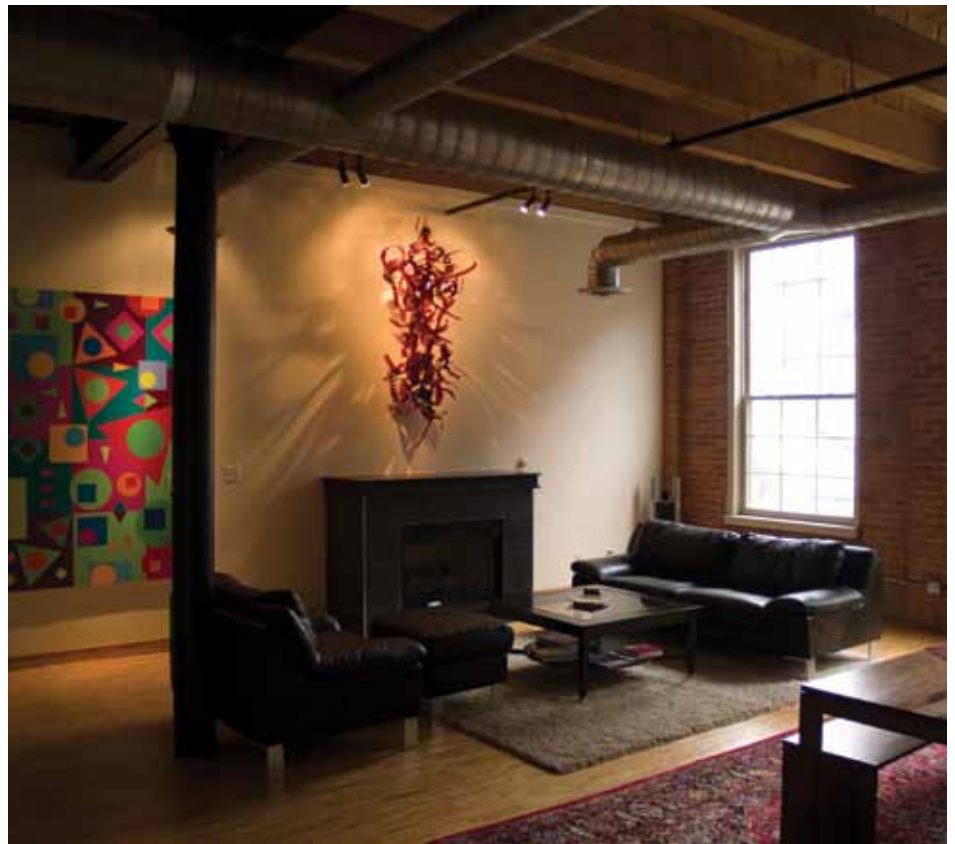
## The Tempest

Detroit, Michigan

In early 2009 a private client commissioned April to conceptualize and create a one-of-a-kind site-specific hand-blown glass wall sculpture for his Detroit loft. April presented the client with 3 concepts based on his various interests, his lifestyle, environment, and budget. The client chose 'The Tempest' concept with copper ruby red colors and a mix of curling and straight shapes. The sculpture is comprised 2 parts that fit seamlessly together. It is mounted to the wall on 2 hand-made stainless steel posts.

### contact

april wagner  
epiphany studios ltd  
770 orchard lake rd  
pontiac mi usa 48341-2041  
p. 248.745.3786  
f. 248.745.3884  
www.epiphanyglass.com  
april@epiphanyglass.com



The Tempest measures 36" w x 20" d x 6'6" h

[www.epiphanyglass.com](http://www.epiphanyglass.com)

## Solar Flare

Birmingham, Michigan

The upscale Townsend Hotel located in Birmingham MI, commissioned April Wagner to conceptualize and create a showcase centerpiece for their dining area the Rugby Grille. Host to celebrities, politicians, and athletes, the Grille needed a spectacular, breathtaking sculpture. April worked diligently to come up with a concept that worked with the rich woods, elaborate carpeting, and detailed wall coverings. This was a difficult task. April not only met the challenge, but exceeded expectations in creating "Solar Flare". Comprised of hundreds of individually hand-blown glass parts, the sculpture is mounted onto a piece of black granite.

### about april wagner

April Wagner and her partner Jason Ruff have owned and operated **epiphany studios ltd** in pontiac mi. for over a decade. The studio creates a line of functional glass pieces shown in over 300 galleries worldwide. April Wagner's signature custom installations are featured in numerous public spaces and private collections.



Memorable dining experiences transcend the simple enjoyment of delicious food. They require total sensory integration. Light, music, tabletop design and visual art are as inextricably involved in creating an enduring feeling as food and service. Glass artisan April Wagner designed and created a custom glass sculpture specifically to enhance the Rugby Grille conceptually and to illuminate the space. 'Solar Flare' commands attention and lends an energy and sense of unspoken possibility to the atmosphere."

**Keith Schofield**  
Director of Restaurant Operations

Solar Flare measures 40" w x 20" d x 40" h

[www.epiphanyglass.com](http://www.epiphanyglass.com)